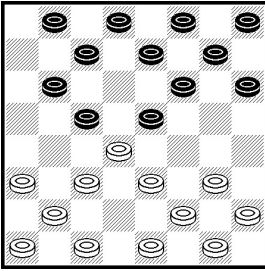


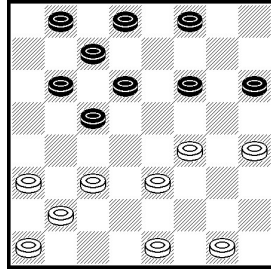
WQT 2023 Round 8

66



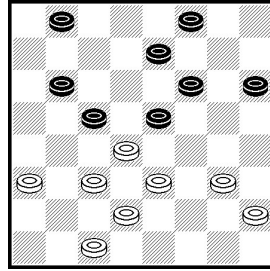
Red to move and draw

67



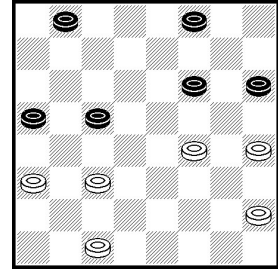
2-7\* RW

68



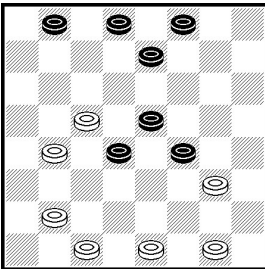
24-19\* draw

69



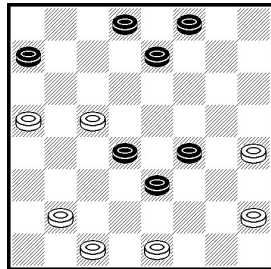
1-6\* RW, 3-7 draw

70



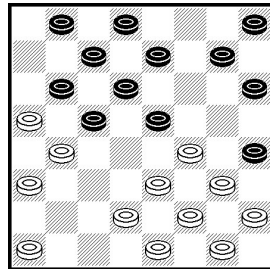
24-20\* the only draw

71



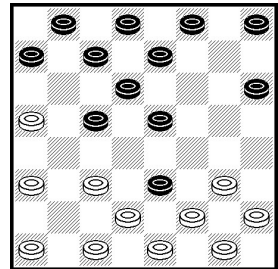
14-9\* draw

72



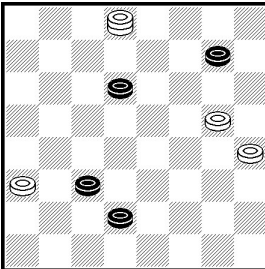
1-5? Loses, 2-7 dr

73



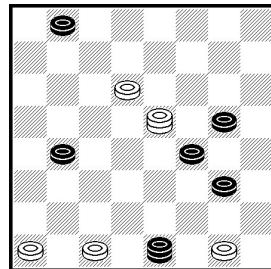
27x9? earlier loss

74



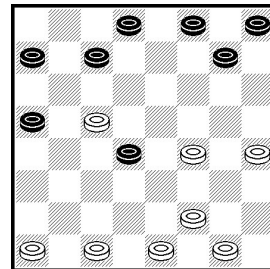
Text unreadable, draw

75



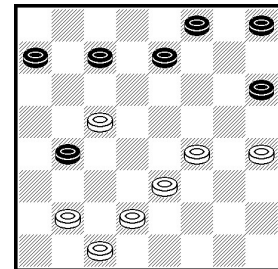
29-25\* the only draw

76



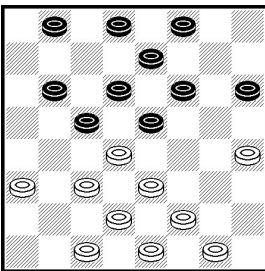
8-12? loses by 19-15\*

77



6-9? Draw

78



12-16? loses, 1-5 OK

## ROUND 8

### **66-67. S. McCosker vs R. King, RD8, G2**

On **diagram 66** Ron King got here into earlier published play loss 30-26? Instead, 24-19 is correct way to keep draw in hands: 15x24, 28x19, 7-10, 27-24\* (30-26? Returns back to losing path) **Draw**

After several moves they reached position on **diagram 67**. Here Shane missed a last chance in this event to improve his tournament situation: 2-7\* here won after 32-28 (22-18, 10-15, 19x10, 6x22, 25x18, 1-6 **Red Wins**), 11-15 (10-15, 19x10, 6x15, 23-19\*, 15x24, 28x19, 7-10, 22-17\* **Draw!**), 28-24, 3-8, 31-27, 15-18\*, 22x15, 7-11 **Red Wins**

### **68-69. D. Oliphant vs K. Layne, RD8, G1**

Another "double missing": missed a draw—missed a win. In position on **diagram 68** white missed a drawn continuation 24-19, 15x24, 28x19, 12-16, 19x12, 7-10, 21-17, 14x21, 22-17 **Draw**

After 23-19? game continued: 14x23, 19x10, 7x14, 26x19, 9-13 (11-16 **Draw**), 24-20 and they reached position on **diagram 69**. Here 1-6\* wins, but 3-7? Is only draw.

### **70-71. V. Lapin vs I. Karny, RD8, G1**

In position on **diagram 70** open 1<sup>st</sup> row here 32-28? is suicide move indeed! Playing 24-20\* and keep developing men without touching 1<sup>st</sup> row would be correct approach. This also would allow white safely to pitch man later when opportunity arrive.

After 32-28, 18-23, 24-20 red missed a win by 3-8-12-16 and going to 1<sup>st</sup> row and crown King. After 15-18, 17-13, 1-5 players reached position on **diagram 71**. And here white missed a a last chance to save game by pitching 14-9\*, 5x14, 13-9, crown the King and come back to arena.

### **72. I. Karny vs V. Lapin, RD8, G2**

1-5? move here certainly is against basic strategic rule – do not open hole on square 1 without serious needs. 7-11\* was correct response in this position.

### **73-74. D. Pawlek vs T. Hehn, RD8, G1**

Mainly in each game for this article I tried to pick diagram where mistake was made and scientific course of game changed from draw to loss or from win to draw. However, this game is a truly champion, because logical course of game changed eight times! I am giving you here full text of game and two diagrams where error was made first and last time, and text comments to each mistake.

11-15, 23-19, 8-11, 22-17, 9-14, 25-22, 11-16, 17-13, 16x23, 27x9 **(A)**, 5x14, 29-25, 4-8, 32-27, 8-11, 27-23, 6-9 **(B)**, 13x6, 2x9, 22-17, 9-13, 25-22, 3-8 **(C)**, 24-20 **(D)**, 15-19, 23x16, 12x19, 26-23, 19x26, 30x23, 11-15, 31-27 **(E)**, 7-11, 27-24, 1-6 **(F)**, 24-19, 15x24 28x19, 11-15, 19-16, 15-19 **(G)**, 22-18, 13x22, 18x2, 19x26 **(H)**

**A.** See **diagram 71** – 27x11 draw.

**B.** Missing a win 11-16 or 3-8.

**C.** Loses for red – 11-16 or 1-5 drew the game.

**D.** Missing a win – 23-18, 14x23, 26x19 **WW**

**E.** Loses! 23-19 (best) or 20-16 - draw

F. Missing a win. 1-5 or 8-12 won for red

G. Loses, 8-12, 16-11, 15-19, 23x16, 12x19 with following 14-18 – drew the game.

H. From game processor Jim Loy: "*draw {unreadable}*" – see **diagram 74 - WW**.

**75. C. Odhiambo vs L. Dyanibokwe, RD8, G1**

White are man down but so far they havent being in loss. Here is the only moment in game when white played losing move 15-11?, 17-22\* **RW**. In position on **diagram 75** draw was still available after 29-25\*, 31-26, 30x23, 19x26, 25-21\*, 17-22, 15-18 **Draw**

**76-77. I. Martynov vs D. Mwaboti, RD8, G1**

White won this game which means – red makes two mistakes and white one less.

In position on **diagram 76** red played losing 8-12? move and white missed a winning aggressive 19-15 and going into first row. Instead, white played 29-25? and game continued: 13-17 (red missed another draw 4-8\* to stop white 19-15), 31-26, 2-7, 27-23, 18x27, 32x23 and players reached position on **diagram 77**.

Here 6-9\* was still a clever draw after 23-18, 7-11\*, 25-21, 9-13, 19-16, 12x19, 26-22, 17x26, 30x7, 3x17, 21x14, 4-8, 19-15, 13-17 **Draw**. Instead, in position on **diagram 77** red played 6-10? and soon lost.

**78. D. Mwaboti vs I. Martynov, RD8, G2**

12-16? loses here as played in game: 27-24\*, 3-8, 22-17, 15x22, 23-18\* White Wins