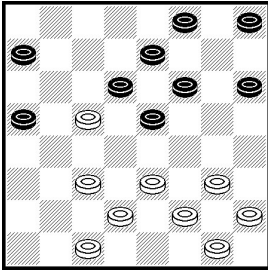


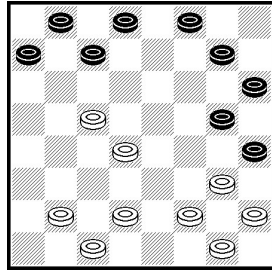
WQT 2023 Round 3

18



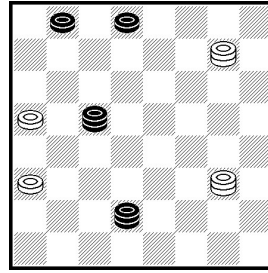
14-9\* best

19



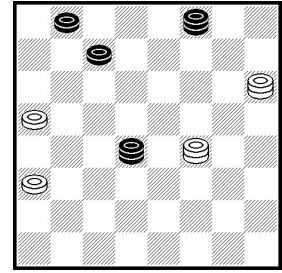
6-10\* draw

20



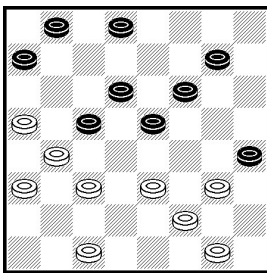
24-19\* dr, 8-11? loses

21



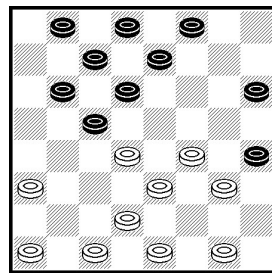
12-16 dr, 19-16? loses

22



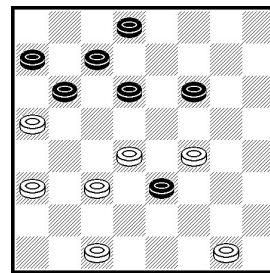
8-12? Loses

23



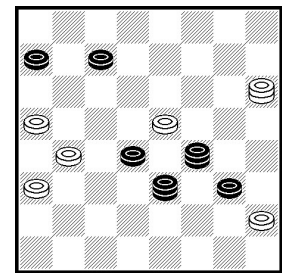
29-25 OK, 32-28? loses

24



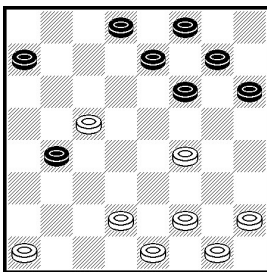
22-17\* dr, 30-25? loses

25



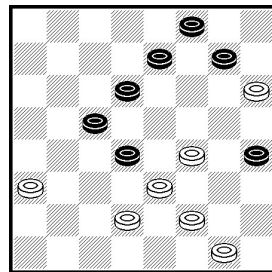
15-10? Loses

26



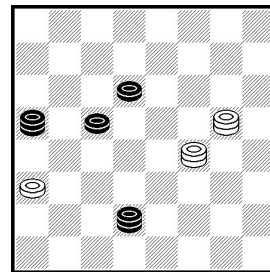
26-22? loses

27



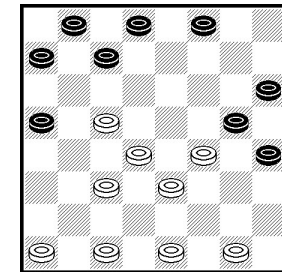
19-16? loses, 19-15 dr

28



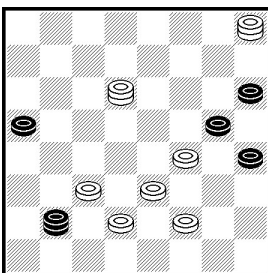
Red to move

29



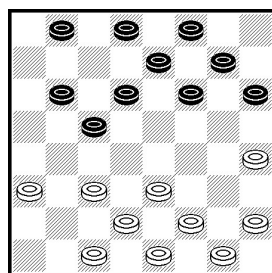
3-7\* dr, 6-9? loses

30



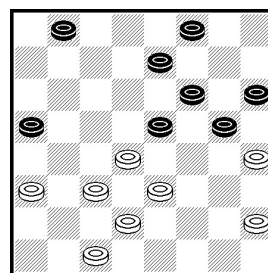
19-15! WW

31



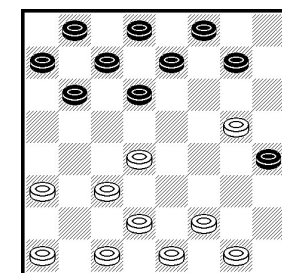
22-17\* win

32



15-19\* draw

33



White to move, RW

## ROUND 3

### 18. R. King vs D. Oliphant, RD3, G1

14-9\* pitch (red has to return man back soon) here is best. Donald Oliphant played 23-19, 10x17, 19x10, 7x14 which also is a weak draw after 24-20\*, but he played now losing 24-19?

### 19. D. Oliphant vs R. King, RD3, G2

Relatively weak but playable and draw with care of after 6-10\*. 6-9? as played in game, loses

### 20-21. S. McCosker vs K. Layne, RD3, G1

One of the most complicated and confusing endings on board! It is drawn in database, but it's really hard to follow correct path when clocks are ticking. In this game white several times missed a draw and red several times missed a winning continuation. I am giving here only two occasions when mistake happen: first and last time. On both occasions white played losing move.

### 22. K. Layne vs S. McCosker, RD3, G2

Kent Layne played losing 8-12? here letting white immediately play killing 13-9\*. Instead, 1-6 or 2-6 was enough for draw.

### 23. M. Nonyukela vs V. Mazibuko, RD3, G2

32-28? loses here by 10-15\* as played in game, instead 29-25 is OK.

Jim Loy: "29-25 draw, J. Reed - C. Barker, 1891 match g.10"

### 24. D. Mwaboti vs L. Dyanibokwe, RD3, G1

Draw was available after 22-17\*, 9-14, 18x9, 5x14, 32-28\* etc. But white played 30-25? and lost.

### 25. L. Dyanibokwe vs D. Mwaboti, RD3, G2

15-10\* was an easy and fast draw, but white played 17-14? and lost.

### 26. V. Lapin vs D. Pawlek, RD3, G1

26-22? here is already PP loss after 17x26, 31x22, 2-6, 27-23, 6-10, 22-17, 11-16\* **RW**.

### 27-28. I. Martynov vs J. Francis, RD3, G1

In position on **diagram 27** Jack played here losing 19-16? and after 8-11\* should resign. However game continued and after several moves they reached position on **diagram 28**.

Here Igor Martynov played 13-9 and Jack immediately replied 19-15. It seems like it was unexpected move for Igor and he emotionally said " ... \*\*\*! Draw?" without much looking at position and offer was accepted! **WOW**

In fact, after 19-15 red still had a win after trade with two mans against two. And even 14-18\* in position on **diagram 28** is still a win due to move.

### 29-30. I. Martynov vs J. Francis, RD3, G2

In this game Jack Francis decided that time comes up and seriously overplayed it. However, in position on **diagram 29** draw was still available by 3-7\*, but Jack played 6-9? and got into loss after 32-27\*, 2-7, 29-25, 1-6, 25-21, 6-10, 31-26 **White Win**

Since then Igor Martynov played it perfectly and after several moves they reached position on **diagram 30**. Here white has two men up and are forced to give back both of them to secure win: 19-15!!, 25x11, 26-22 **White Wins**. Jack refused to resign and kept playing man down for quite a bit

### **31-32. T. Hehn vs A. Moiseyev, RD3, G1**

In this game Thomas just played losing 6-9? instead correct 10-15\* (the only drawn move) with relatively even position. After 6-9? I played it too fast 28-24 which gives white good edge, but no scientific win. However, in position on **diagram 31** it was much better and stronger move – 22-17\* which wins immediately. During next several moves Thomas missed couple times drawn chances, and we reached position on **diagram 32**. Here red had very pretty and the only draw – 15-19\* but he played 7-10? and lost after 28-24\* **White Wins**

### **33. A. Moiseyev vs T. Hehn, RD3, G2**

White just made a losing trade 19-16? and after 4-8 we reached position on **diagram 33**. Here Thomas Hehn played strange 27-23 and lost unevenfully after several moves. However, even strongest reply 29-25 is still a loss after 10-14, 16-11, 7x16. 22-17, 14x23, 26x12, 9-13\* **RW**