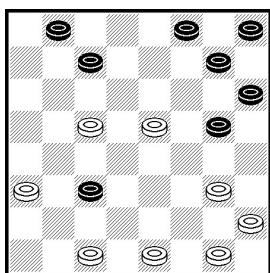


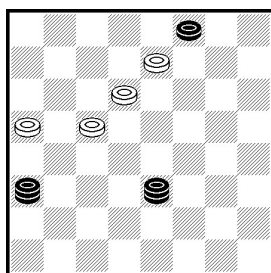
WQT 2023 Round 2

9



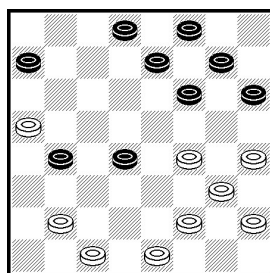
22-25? loses

10



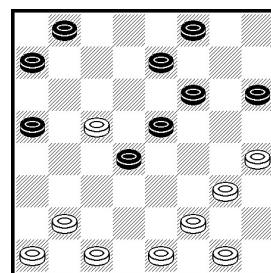
21-17? loses, 23-19 dr

11



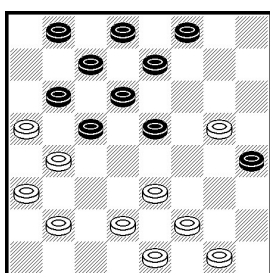
17-21? loses, 17-22 OK

12



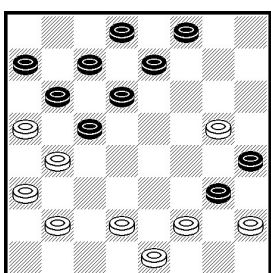
25-21 & 32-28 draw

13



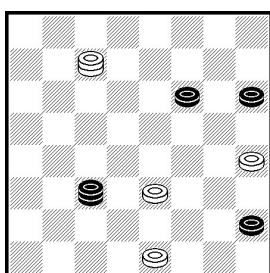
1-5? loses

14



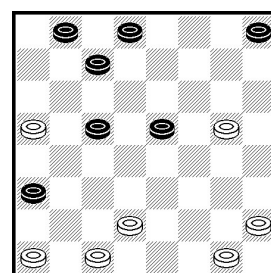
3-8* draw

15



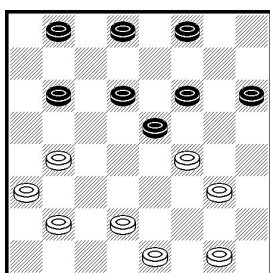
6-10* draw

16



6-10* weak draw

17



11-16* RW

ROUND 2

9-10. L. Kondlo vs C. Odhiambo, RD2, G1

Three errors were committed in this game: two by red and one by white! In position on **diagram 9** L. Kondlo played losing 22-25? Instead, 8-11 saved the game. After 22-25 game continued and after several moves they reached position on **diagram 10**.

Here 21-17? as played in game, loses, but 23-19* is still a clever draw: 7-2, 19-15, 10-6 (2-6, 15-11 etc **Draw**), 21-17, 14-10, 15-11 **Draw**

11. S. McCosker vs M. Nonyukela, RD2, G1

Just trying to remember when Shane lost both game in his career ... and I can't! Looks simple, isn't
– 17-22*, 25-21, 5-9* => **Draw**, 17-21? on **diagram 11** loses.

12. M. Nonyukela vs S. McCosker, RD2, G2

Published play loss: 24-19?, 15x24, 32-28, 11-15 **Red Wins**

13-14. D. Oliphant vs V. Mazibuko, RD2, G1

Truly comedy of errors! 7-11* on **diagram 13** is OK for draw, but red played losing 1-5? White played 23-19 and ... missed a win 16-12*. Game continued from **diagram 13**: 1-5, 23-19, 15x24, 32-28 and players reached position on **diagram 14**. Here red made a final error by playing losing 7-11? Instead, 3-8, 28x19, 8-12 should survive.

15. V. Mazibuko vs D. Oliphant, Rd2, G2

31-27? lost quickly, but pretty draw was still available after 6-10*, 28-32, 10-14* **Draw**

16. I. Karny vs R. King, RD2, G1

Idan didn't play this game very safely before, but draw was still available here after 6-10*.

17. R. King vs I. Karny, RD2, G2

If game recording is accurate, Suki missed a win here 11-16*. Instead, he played 9-14? to draw